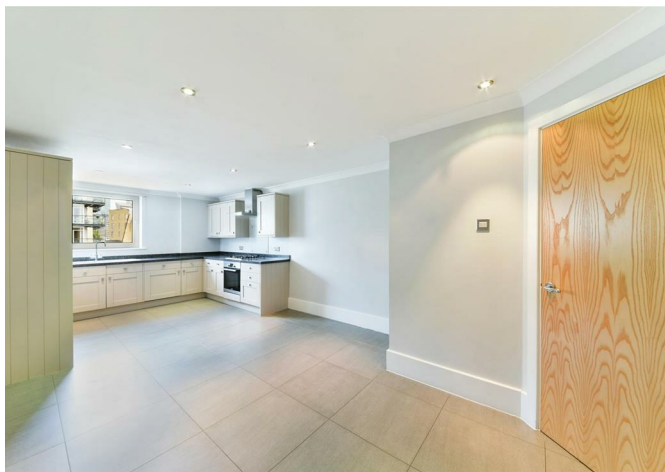




12 Dunbar Wharf, 108-124 Narrow Street, Limehouse, London, E14 8BB
£1,500,000



12 Dunbar Wharf, 108-124 Narrow Street, Limehouse, London, E14 8BB

£1,500,000

Located in Limehouse on Narrow Street, is this amazing and spacious three bedroom, three bathroom apartment in Dunbar Wharf in E14.

With 3 bedrooms, 3 bathrooms, a separate eat in kitchen and separate spacious living room and is situated on the 4th floor with amazing River Thames views from the wrap around balcony on the bend of the River Thames.

With an allocated parking space underground, and benefits from the use of a 24hr concierge and a residents gym.

Available Chain Free.

Within walking distance of some some great pubs and restaurants such as The Grapes and Gordon Ramsays gastropub The Narrow. And the River walk way from Canary Wharf to Tower Bridge.

Limehouse DLR is only a short distance away with direct links into The City and Canary Wharf.

Description

Located in Limehouse on Narrow Street, is this amazing and spacious three bedroom, three bathroom apartment in Dunbar Wharf in E14.

With 3 bedrooms, 3 bathrooms, a separate eat in kitchen and separate spacious living room and is situated on the 4th floor with amazing River Thames views from the wrap around balcony on the bend of the River Thames.

With an allocated parking space underground, and benefits from the use of a 24hr concierge and a residents gym.

Available Chain Free.

Situation

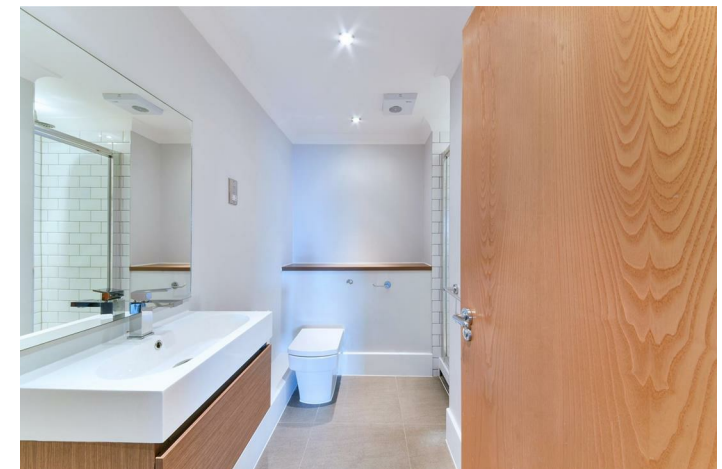
Within walking distance of some some great pubs and restaurants such as The Grapes and Gordon Ramsays gastropub The Narrow. And the River walk way from Canary Wharf to Tower Bridge.

Limehouse DLR is only a short distance away with direct links into The City and Canary Wharf.

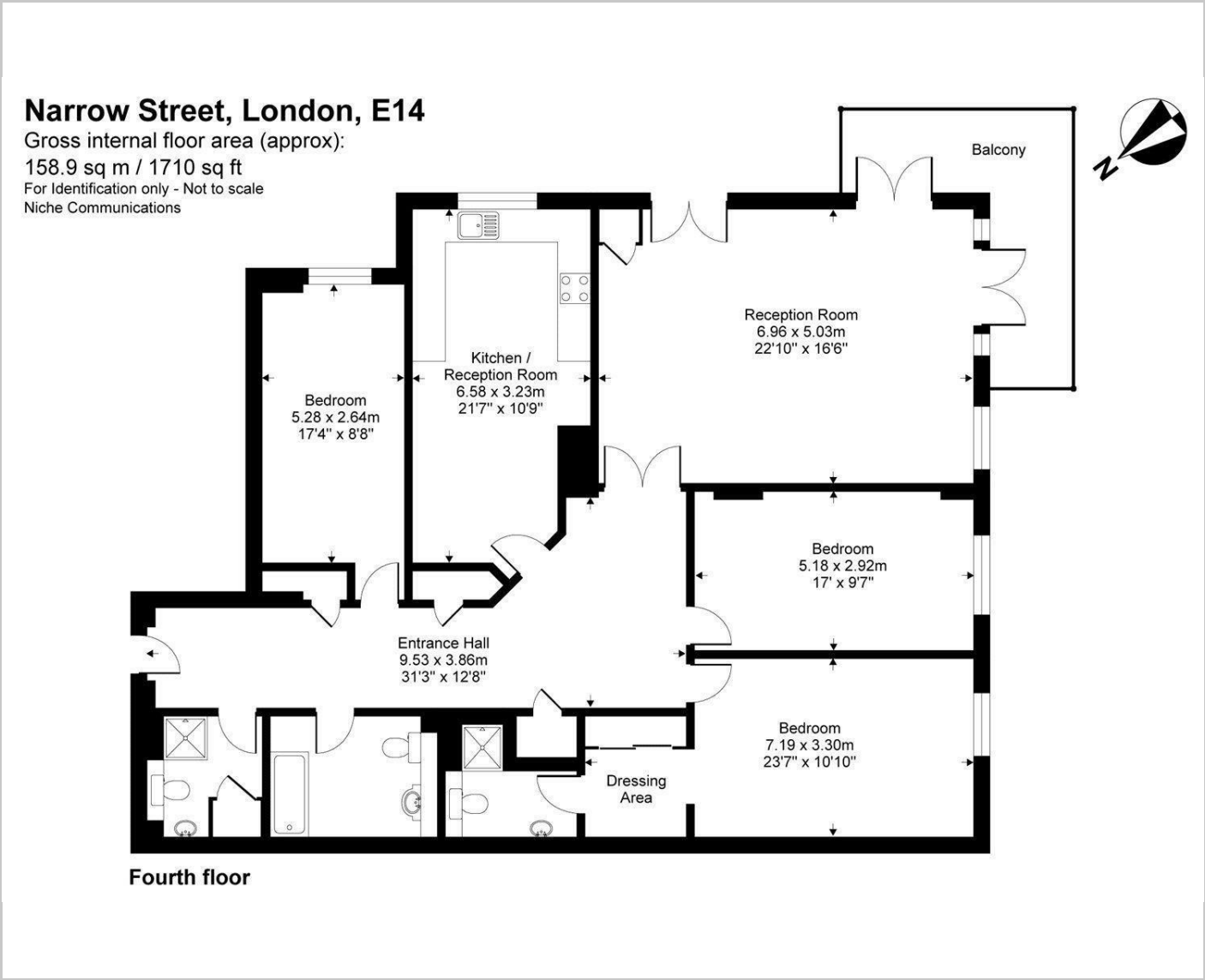
null

Council Tax Band: G

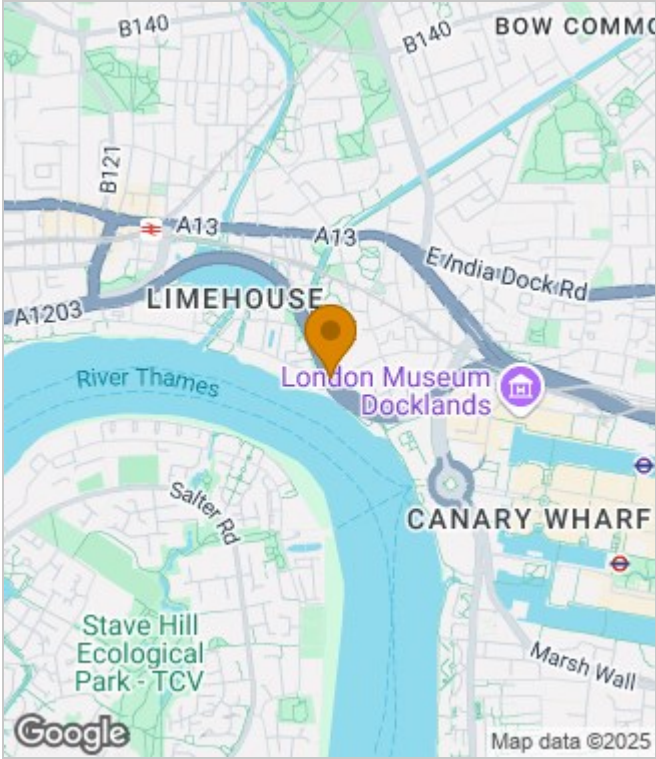
Available:



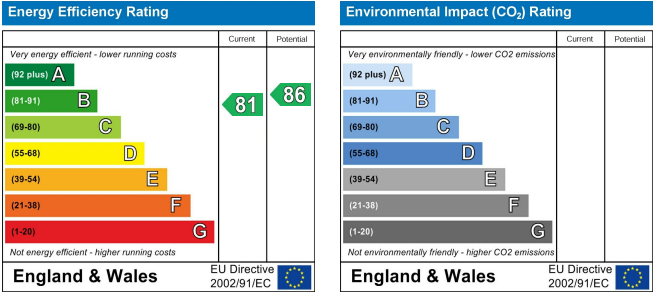
Floor Plans



Area Map



Energy Performance Graph



These particulars, whilst believed to be accurate are set out as a general outline only for guidance and do not constitute any part of an offer or contract. Intending purchasers should not rely on them as statements of representation of fact, but must satisfy themselves by inspection or otherwise as to their accuracy. No person in this firms employment has the authority to make or give any representation or warranty in respect of the property.